

PRESS RELEASE

**DAVID GEORGE**  
**EAST OF EDEN**

*Photogravures and colour prints*  
*from The North of England*

28 February – 22 March 2025

**Private View:**

Thursday, 27<sup>th</sup> Feb, 6-9 PM

**Artist Talk, 8<sup>th</sup> March, 14.30**

David George

in conversation with Zelda Cheatle

448 New Cross Road  
London SE14 6TY  
[info@mmxgallery.com](mailto:info@mmxgallery.com)



MMX Gallery is delighted to present *East of Eden*, a solo exhibition by David George.

David George has been exploring photographic representations of the contemporary British landscapes for forty years and has incorporated themes prevalent in nineteenth century painting practice and aesthetic, to aid this exploration. He has appropriated the sublime, melancholy, the romantic, the pastoral and the uncanny to create something that not only represents the contemporary landscape in a pictorial way, but also making work that can be still viewed as documenting the landscape.

An exhibition showcasing David's most recent series of photographs (2018-2025) that document the Rivers Tees, Tyne and Wear as they traverse the topography of the North East.

It uses the landscapes that have been created by the ever changing industrial, economic, political, and sometimes social needs and interventions along their course, from their source in the High Pennines on Cross Fell to their meeting with the North Sea on the Northeast coast of England .

The intention of this series was to document, using both analogue and digital photography, how these rivers cuts a deep, visible, timeline through the landscapes that have been formed by man's use of the land over millennia. This occurs in a multitude of ways and the photographs show the evolution and adaptation the topographies have undergone as our industries and societies needs have changed, engaging with a landscape that constantly reinvents itself.

The "East of Eden" series derives its name from its geographical location high in the Pennines to the east of the Eden Valley where these three rivers first rise. In the Book of Genesis, the area east of the Garden of the Eden was known as the Land of Nod. Significantly 'Nod' is the Hebrew root of the verb 'to wander' and David George thought it was an apt way not only to describe the movement of a river through the landscape but also chimes with the way he undertook the project. This exhibition considers two strands of the project. The first looks at work made as David followed the River Tees from its source to the sea on a 10-day 200km walk in June 2018 which was to follow the river on foot from its source to its mouth. The second strand is a series made from an eight day, 180km walk in September 2020 starting at the mouth of the River Tees following the coastline north to Scotland to connect the mouths of the three rivers.

The exhibition will present a selection of colour night work and photogravures. David wanted, somehow, for the 'cinematic-romantic' element to the project to co-exist with the more documentary black and white daylight work, which was shot on film and rendered as photogravure. Again, this was to develop both classical and romantic ideas about the river and to get the two styles in opposition to come together and to create something whose sum was much greater than its parts.

**David George's** interest in British landscape began under the tutelage of John Blakemore at Derby University and continues to be a major part of his practice, now mainly concerned with ideas of classical and romantic visual semantics in the contemporary British landscape.

His work looks at the decline of traditional industries, incorporating his interest in 19th century European landscape painting.

David George (b.1957, Cheltenham and brought up in County Durham) lives and works in east London and in 2009 he co-founded the Uncertain States project which championed contemporary thinking and practice in UK photography by means of a quarterly broadsheet, artists' talks and exhibitions. The project ran for ten years and incorporated over 250 artists, writers and academics into the project.

David's work has been included in *The Observer*, *Photomonitor*, *The Evening Standard*, *British Journal of Photography* and *The Sunday Times Magazine*, as well as publications including *Archive*, *Imagining The East End*, published by Black Dog in 2013. David George's monograph *Hackney By Night*, was published by Hoxton Mini Press in 2015.

David exhibits nationally and internationally and is an associate lecturer at London Metropolitan University and visiting lecturer at Norwich University of Arts. His work is in many private and institutional collections.



David George, *Warrenby*, 2018, Photogravure; Ink on archival paper photogravure, 10.5 x 14.85 cm

#### **LISTING INFORMATION**

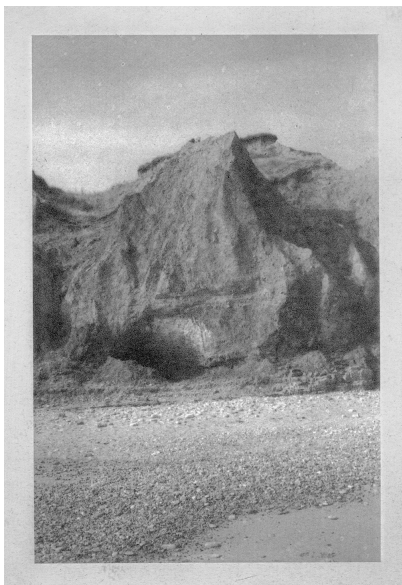
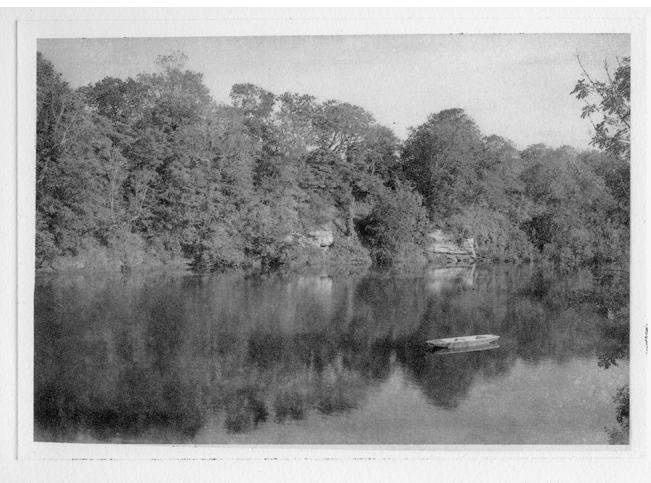
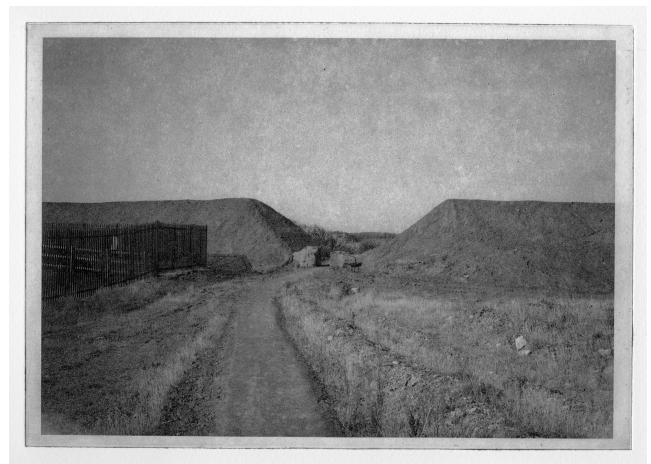
David George: East of Eden  
Photogravures and colour prints from  
The North of England  
28 February - 22 March 2025  
[www.mmxgallery.com](http://www.mmxgallery.com)  
448 New Cross Rd, London SE14 6TY  
Opening Times: Wed - Fri, 12 - 6pm,  
Saturday: 11- 5pm

#### **PRESS INFORMATION**

To request further information and  
images please contact  
Magdalena Shackleton:  
[info@mmxgallery.com](mailto:info@mmxgallery.com)  
M: 07944677511 | T: 020 8692 6728

#### **NOTE TO EDITORS**

All images © David George,  
Courtesy of the Artist & MMX Gallery  
SOCIAL MEDIA:  
Twitter | Facebook | Instagram  
[@mmxgallery](https://www.instagram.com/mmxgallery),  
[@davidgeorgephotography](https://www.instagram.com/davidgeorgephotography)



Images – All photogravures: *Hartlepool Nuclear Power Station with Elsie and Hector*, 2018 (first page)  
This page from top to bottom in pairs: 1. *Beadnel*, 2020. 2. *Cresswell Power Station* 2020;  
3. *Warkworth*, 2020, 4. *Alnmouth*, 2020;  
5. *Seaham Cliffs*, 2020.; 6. *Hartlepool North Beach*, 2020





Images:

1. #041, South Gare Access Road, 2009 (top left),
2. Port Clearance, 2019 (top right)
3. Paddy's Hole, 2019 (bottom left),
4. High Force, 2019 (the waterfall)